



Advanced Technology  
INTERNATIONAL

# Mossberg Side Saddle and Nine Piece Full Add-a-Shell Package Part # A.5.10.1002 -Installation Instructions-

Point the shotgun in a safe direction and place the safety in the "on" position. Next pull back the slide, and carefully inspect the chamber to be sure the shotgun is unloaded.



## Mossberg Side Saddle Installation

### Step #1

Begin by removing the (4) 8-40 x 3/16" existing set screws from the top of the receiver using a small flat head screwdriver.



Figure 1

### Step #3

Next, using a 1/8" allen wrench, mount the rail to the top of the ATI Halo Side Saddle using the (2) 10/32 x 3/8" flat head screws provided.



Figure 3

### Step #2

Next, mount the ATI Halo Side Saddle to the receiver using the (4) 8-40 x 3/8" flat head screws provided and a 3/32" allen wrench.

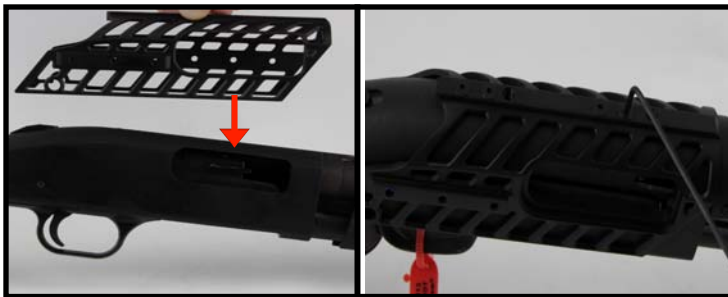


Figure 2A

Figure 2B

### Step #4

Place the (2) Add-a-Shell pads into the rear slots in the rear of the Add-a-Shell and screw into place using the (2) 6-32 x 1" socket head cap screws provided and a 5/64" allen wrench.



Figure 4

Advanced Technology International • Made In the USA • Limited Lifetime Warranty  
2733 West Carmen Ave • Milwaukee, WI 53209  
Toll Free: 800.925.2522 • Fax: 414.464.3112

# www.ATIGunstocks.com



# Mossberg Side Saddle and Nine Piece Full Add-a-Shell Package

Advanced Technology  
INTERNATIONAL

## -Installation Instructions-

**Point the shotgun in a safe direction and place the safety in the "on" position. Next pull back the slide, and carefully inspect the chamber to be sure the shotgun is unloaded.**

### Mossberg Side Saddle Installation

#### Step #5

Next, place the Add-a-Shell onto the side of the Halo Side Saddle and install the 10-32 x 3/8" button head screw and washer using a 1/8" allen wrench. Thread the 10-32 x 3/8" button head screw into one of the mounting holes on the Halo Side Saddle. You may mount up to 6 Add-a-Shells to the non-ejection port side and up to 3 on the ejection port side.



Figure 5

*Note: Mount the Add-A-Shells with the screwheads facing down.*

Advanced Technology International • Made In the USA • Limited Lifetime Warranty  
2733 West Carmen Ave • Milwaukee, WI 53209  
Toll Free: 800.925.2522 • Fax: 414.464.3112

**[www.ATIGunstocks.com](http://www.ATIGunstocks.com)**